

W e . s u p p o r t . t h e  
i n n o v a t i o n s . o f . c u s t o m e r s

# Leak - Proof Flow & Control Solution Partner

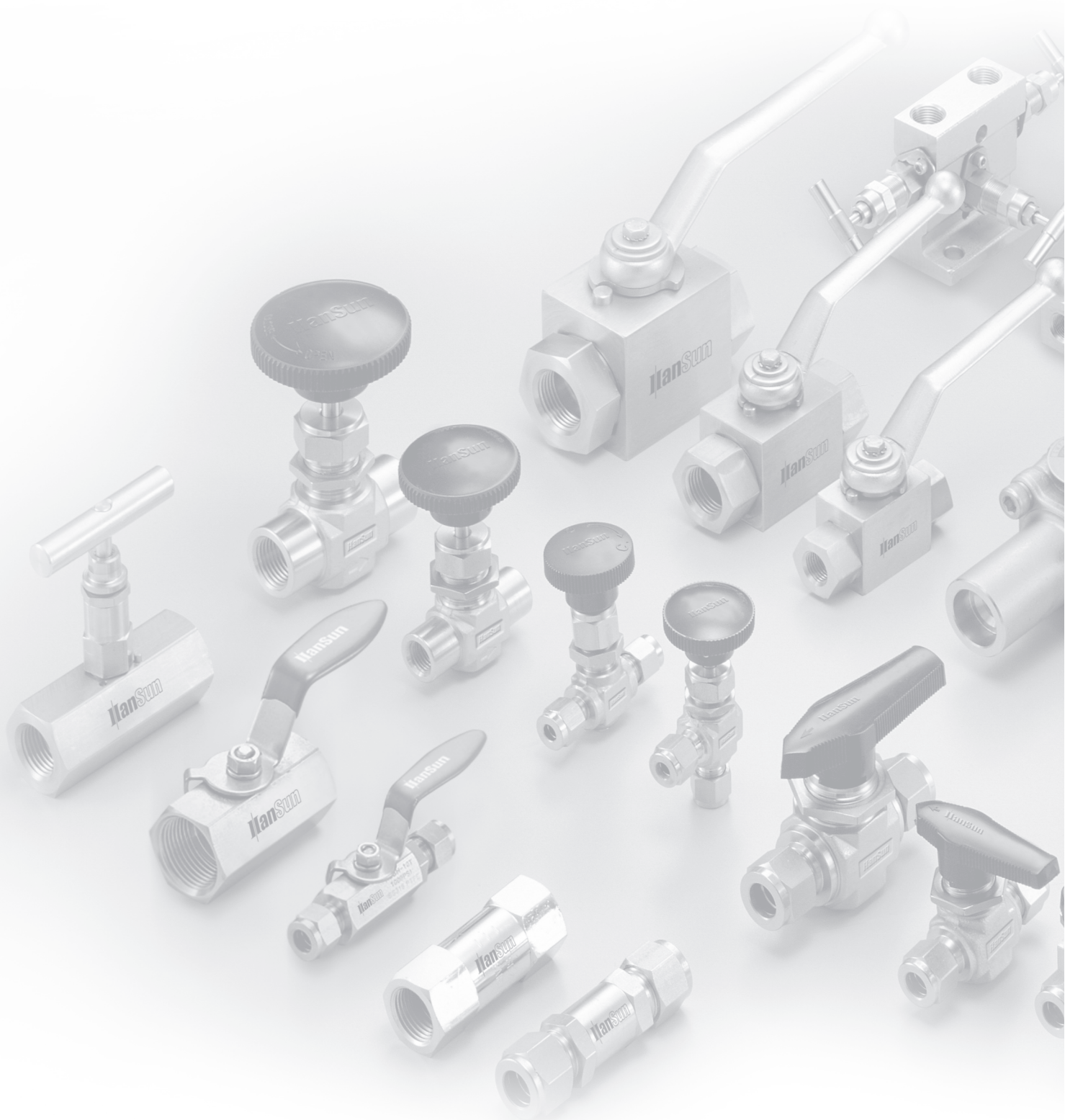
The Best Partner  
for Value Creation

**S-LOK®** Integral Block & Bleed Valves

**HanSun**

한선엔지니어링(주)  
HANSUN ENGINEERING CO., LTD.

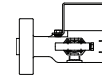




## Single Block & Bleed Valves

### SSB SERIES

SSB  
Series

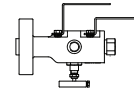


11~12

## Double Block & Bleed Valves

### SDB SERIES

SDB  
Series

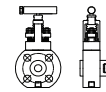


13~14

## Monoflange Valves

### SMNF SERIES

SMNF  
Series



17~23

## Application & Installation

### SOLUTIONS

S-LOK instrumentation products has the ultimate solutions for a compact range one-piece forged body Primary Isolation Valves, featuring a choice of end connections, body styles and valve technology

### Applications

- Double block and bleed instrument isolation
- Gauge isolation
- Instrument drain
- Chemical injection connection
- Sample connection
- Chemical instrument interface
- Piping/instrument interface
- Direct mounting of instruments
- Remote mounting of instruments

### Advantages

- More compact design
- Reduced weight
- Reduced height
- Reduced leakage points
- Reduced effect of system vibration
- Supporting bracket are not required
- Reduced bending moment acting on the vessel branch fitting weld
- Reduced installation cost
- Reduced gaskets and bolting

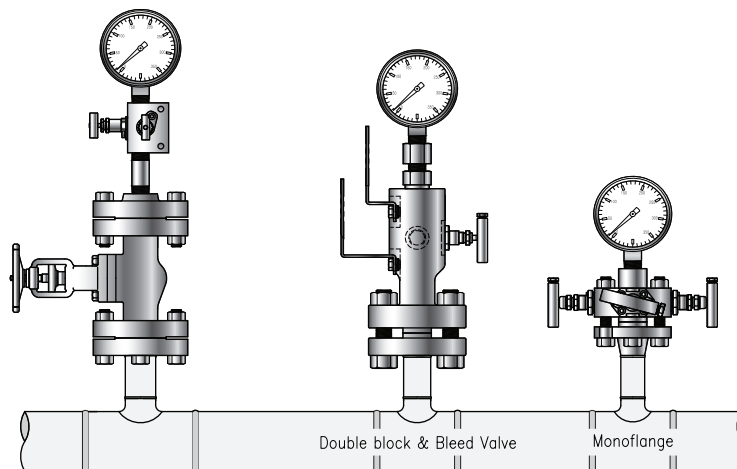
### Market

- Offshore oil and gas production
- Offshore terminals
- Chemical, petro-chemical, refining
- Control panel manufactures
- Process/Power industry contractors
- Compressor manufactures
- LNG Carrier

### Design codes

- ANSI/ASME B16.34 Material wall thickness
- ANSI/ASME B16.5 Flange dimensions
- ANSI/ASME B1.20.1 National pipe threads
- API 607/BS 6755 Fire tested

Integral Block & Bleed Valve Assembly



### Conventional Assembly

#### Modular Valve

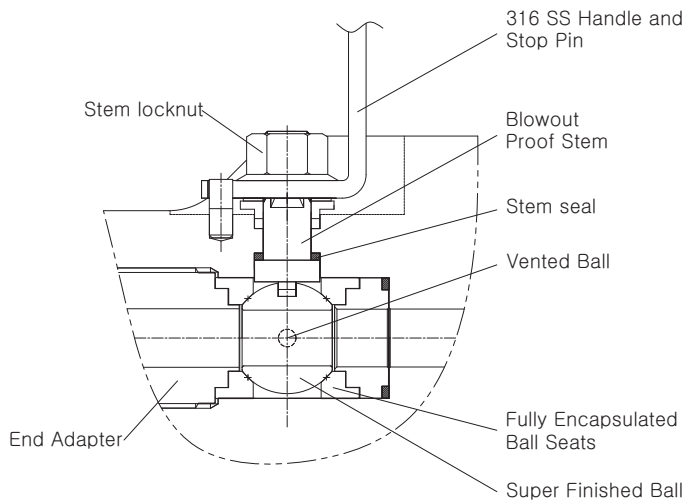
Ball and Globe Style Needle valves  
Flange and Threads Connections  
Integrally Forged Body

#### Monoflanges

Globe Style Needle Valves  
Flange and Threads Connections  
Slimline Integrally Forged Body

## Specification

### Ball Valve Specification

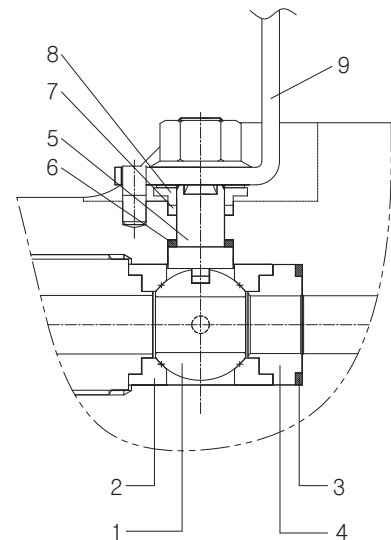


### Features

- Stainless steel handle and positive machined stop.
- Full grip PVC handle sleeve.
- Blowout proof one-piece stem spindle.
- Low operating torque.
- Fully encapsulated extrusion and allow high working pressure.
- Super finished ball for low operating torque and long life.
- End adapter threads are fully isolated from process by primary and secondary static seals.
- Stem locknut is vibration resistant to avoid working loose.
- Color coded and function identified handles.
- Fire safe to API 607, BS 6755 part 2.
- Bore size available 0.37"(9.5mm), 0.55"(14mm).
- Ball seats choice of seat materials: PVDF, PTFE(virgin or filled), PCTFE or PEEK.
- Anti-static design as standard
- Pressure rating up to 10,000psig(690bar).
- Temperature rating -70.6°F to 482°F(-57°C TO 250°C).
- Optional: NACE Compliance, Handle Locking Device, Full bore size.

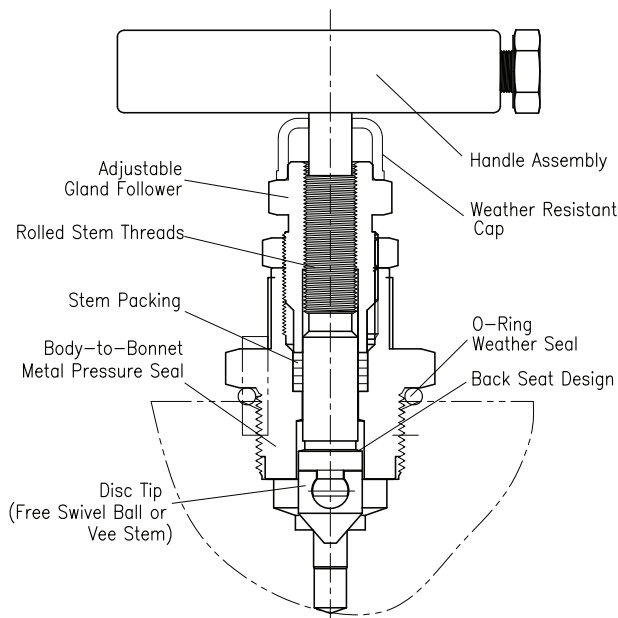
### Part Description

Item	Description				
1	Vented Ball	4	Housing Static Seat	7	Gland Packing
2	Ball Seat	5	Stem	8	Gland
3	Seat Housing	6	Stem Seal	9	Handle Assembly



## Specification

### Needle Type Globe Valve

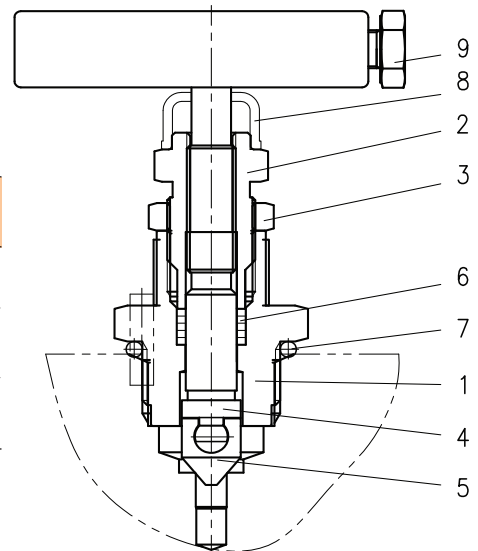


### Features

- Rolled stem threads prevent galling. Stem threads are completely isolated from the process.
- Stem packing with Graphite or PTFE rings for bubble-tight seal.
- Stem tip construction : non-rotating self-centering, Anti-galling tip positive bubble-tight and field interchangeable rip.
- Backseat design provides secondary stem sealing and prevents stem blowout.
- Packing bolt allows easy access to adjust the packing gland.
- Robust bar handle is standard.
- Color coded and function label for easy identification.
- Firesafe to API 607, BS 6755 part2.
- Orifice size 0.2”(5mm).
- Pressure rating up to 10,000psig(690bar).
- Temperature rating -70.6°F to 1,022°F (-57°C to 550°C)
- Anti-Temper bonnets are available with a removable T-bar key to prevent unauthorized operation of vent valves.

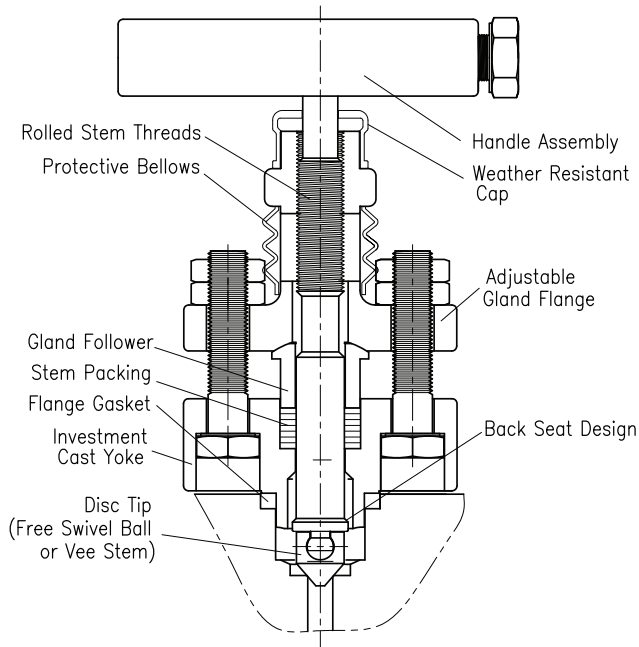
### Part Description

Item	Description				
1	Bonnet	4	Stem	7	O-Ring Weather Seal
2	Gland Follower	5	Disc Tip	8	Weather Resistant CAP
3	Lock Nut	6	Stem Packing	9	Handle Assembly



## Specification

### Outside Screw and Yoke (OS&Y) Needle Type Globe Valve

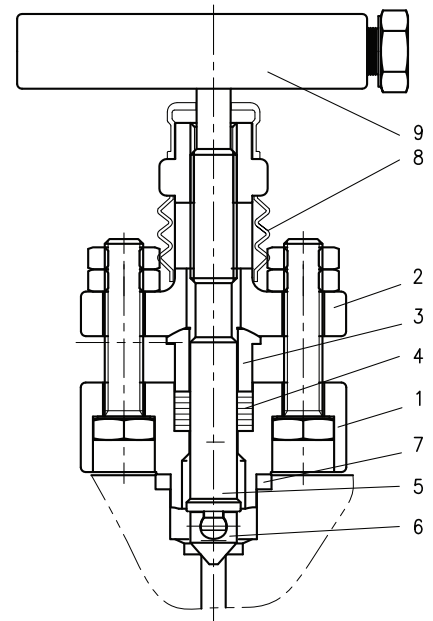


### Features

- Rolled stem threads prevent galling.
- Stem threads are completely isolated from the process.
- Stem packing with Graphite or PTFE rings for bubble-tight seal.
- Bolted bonnet for strength and reliability.
- Stem tip construction: non-rotating self-centering, Anti-galling tip positive bubble-tight and field interchangeable tip.
- Flange gasket seal ensures a bubble-tight between body and bonnet
- Backseat design provides secondary stem sealing and prevents stem blowout
- Adjustable gland flange allows easy access to the packing gland, and packing adjustment for an effective stem seal.
- Investment cast yoke is precision casted for strength and perfect stem alignment.
- Robust bar handle is standard.
- Color coded and function label for easy identification.
- Firesafe to API 607, BS 6755 part2
- Orifice size 0.2”(5mm).
- Pressure rating up to 6,000psig (414bar)
- Temperature rating -70.6°F to 1,022°F (-57°C to 550°C)

### Part Description

Item	Description				
1	York	4	Stem Packing	7	Flange Gasket
2	Gland Flange	5	Stem	8	Protective Bellows
3	Gland Follower	6	Disc Tip	9	Handle Assembly



**Materials of Construction**

Type	Description	Material				
Modular	Body / End Connector	A182 F51	A182 F316	A350 LF2	A105	UNS N04400
Monoflange		A182 F51	A182 F316	A350 LF2	A105	UNS N04400
Ball Valve	Ball	UNS-S31803	A479 TYPE316			UNS NO4400
	Stem	UNS-S31803	A479 TYPE316			UNS NO4400
	Retainer	UNS-S31803	A479 TYPE316			UNS NO4400
	Socket	UNS-S31803	A479 TYPE316		A105	UNS NO4400
	Ball Seat	PVDF,PTFE(virgin or filled), PCTFE or PEEK				
OS&Y Needle Type Globe Valve	Stem Tip	UNS-S31803	A564 TYPE630			UNS NO4400
	Stem	UNS-S31803	A479 TYPE316			UNS NO4400
	Bonnet	UNS-S31803	A479 TYPE316			UNS NO4400
	Yoke	A351 CF8M				
Needle Type Globe Valve	Stem Tip	UNS-S31803	A564 TYPE630			UNS NO4400
	Stem	UNS-S31803	A479 TYPE316			UNS NO4400
	Bonnet	UNS-S31803	A479 TYPE316			UNS NO4400

**NOTE**

Stainless steel is standard body material but such a Monel, Duplex, Super Duplex, Hasteloy, Inconel and other special material are available upon request



We · support · the  
i n n o v a t i o n s · o f · c u s t o m e r s

# Leak - Proof Flow & Control Solution Partner

The Best Partner  
for Value Creation

**S-LOK** Single Block & Bleed / Double Block & Bleed Valves

## Single Block & Bleed Double Block & Bleed Valves

---



**SSB, SDB**

## Modular Valves - Single Block & Bleed / Double Block & Bleed Valves

**Modular Valves** are integrally forged, one-piece double block and bleed assemblies for primary isolation of pressure take-offs, primary isolation of pressure take-offs, where the valve is directly mounted to the vessel or process pipe. Instruments may be directly mounted to the valve outlet or alternatively with gauge lines / impulse pipe work.

### Applications

- Block and bleed
- Double Block and Bleed
- Pressure Measurement
- Chemical Injection
- Level Measurement
- Sampling
- Flow Measurement

### Standard Features

- ANSI B 16.5 flanged Inlet connections 1/2" to 2" sizes.
- Class150 rated to Class2500 rated.
- API flanged Inlet connections sizes to 2 1/16".
- 1/2" NPT threaded female outlet to ANSI/ASME B1.20.1.
- 1/2" NPT threaded female vent connection to ANSI/ASME B1.20.1.
- Material thickness to ANSI B16.34.
- Bolted Body construction (Inlet or Outlet) is options.
- Firesafe to API 607, BS6755 Part2.



### Standard Pressure Testing

- To BS6755 Part1.

### Standard Material Traceability

- To EN 10204 3.1B (Body only).

### Ball Isolation Valve Seat Materials

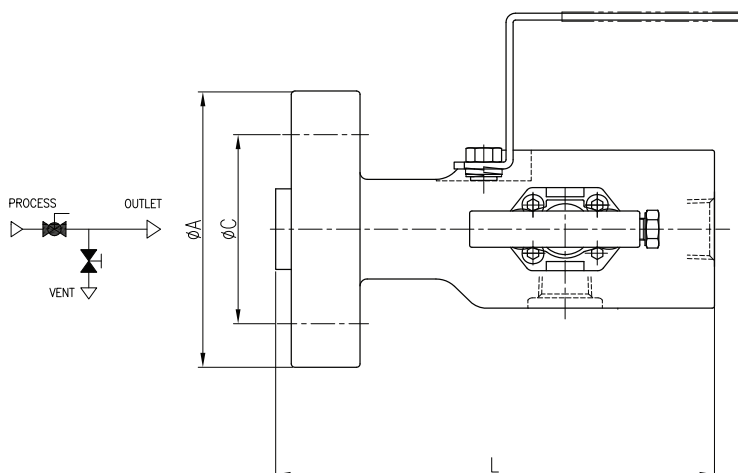
- A choice of PCDF, PTFDF(virgin or filled), PCTFE and PEEK are available

### OS&Y Needle Type and Needle Type Globe Valve Packing Materials

- Standard valves are offered with Graphite. PTFE is also available as an option.

## Modular Valves - Single Block & Bleed Valves

### SSB1

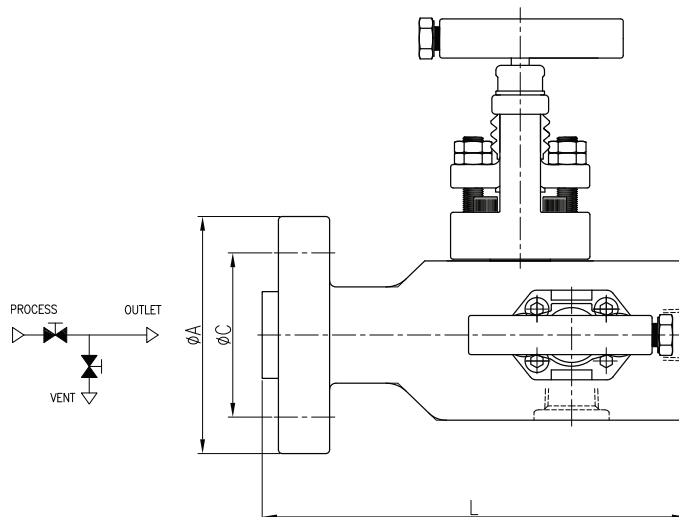


## Dimensions & Weights

Size (inch)	Rating lb	Dimensions(mm)				Weight (kg)
		L(RF)	L(RTJ)	A	C	
1/2	150	188	-	89	60.5	3.6
1/2	300	188	193	96	66.5	3.9
1/2	600	188	196	96	66.5	4.0
1/2	900/1,500	206	213	121	82.6	5.4
1/2	2,500	206	213	134	88.9	6.9
3/4	150	188	-	99	69.9	3.9
3/4	300	188	196	118	82.6	4.6
3/4	600	188	196	118	82.6	4.7
3/4	900/1,500	206	213	130	88.9	6.3
3/4	2,500	206	213	140	95.3	7.5
1	150	178	183	108	79.2	4.0
1	300	180	185	124	88.9	4.6
1	600	180	188	124	88.9	4.7
1	900/1,500	191	198	150	101.8	7.0
1	2,500	206	206	159	108.0	8.6
1 1/2	150	180	185	127	98.6	4.6
1 1/2	300	183	188	156	114.3	6.0
1 1/2	600	193	193	156	114.3	6.5
1 1/2	900/1,500	203	203	178	124.0	9.4
1 1/2	2,500	216	216	203	146.0	15.9
2	150	183	188	153	120.7	6.6
2	300	185	192	165	127.0	8.0
2	600	196	197	165	127.0	8.3
2	900/1,500	226	210	216	165.1	15.0
2	2,500	221	223	235	165.1	22.0

## Modular Valves - Single Block & Bleed Valves

### SSB2

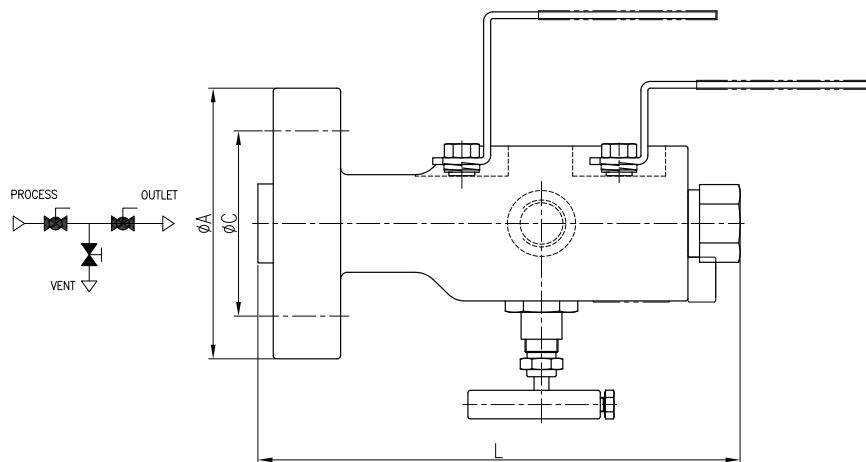


### Dimensions & Weights

Size (inch)	Rating lb	Dimensions(mm)				Weight (kg)
		L(RF)	L(RTJ)	A	C	
1/2	150	161	-	89	60.5	3.6
1/2	300	161	163	96	66.5	3.9
1/2	600	166	165	96	66.5	4.0
1/2	900/1,500	184	184	121	82.6	5.4
1/2	2,500	184	184	134	88.9	6.9
3/4	150	161	-	99	69.9	3.9
3/4	300	161	165	118	82.6	4.6
3/4	600	166	165	118	82.6	4.7
3/4	900/1,500	184	184	130	88.9	6.3
3/4	2,500	184	184	140	95.3	7.5
1	150	156	161	108	79.2	4.0
1	300	159	164	124	88.9	4.6
1	600	159	166	124	88.9	4.7
1	900/1,500	169	177	150	101.6	7.0
1	2,500	183	183	159	108.0	8.6
1 1/2	150	159	164	127	98.6	4.6
1 1/2	300	162	167	156	114.3	6.0
1 1/2	600	170	170	156	114.3	6.5
1 1/2	900/1,500	180	180	178	124.0	9.4
1 1/2	2,500	193	194	203	146.1	15.9
2	150	161	166	153	120.7	6.6
2	300	164	170	165	127.0	8.0
2	600	173	175	165	127.0	8.3
2	900/1,500	186	188	216	165.1	15.0
2	2,500	199	201	235	165.1	22.0

## Modular Valves - Double Block & Bleed Valves

### SDB1

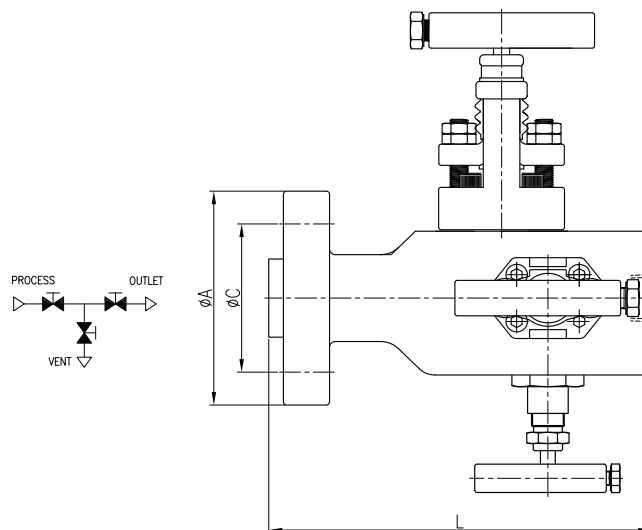


### Dimensions & Weights

Size (inch)	Rating lb	Dimensions(mm)				Weight (kg)
		L(RF)	L(RTJ)	A	C	
1/2	150	208	-	89	60.5	3.6
1/2	300	208	221	96	66.5	3.9
1/2	600	208	221	96	66.5	4.0
1/2	900/1,500	243	256	121	82.6	5.4
1/2	2,500	243	256	134	88.9	6.9
3/4	150	208	-	99	69.9	3.9
3/4	300	208	221	118	82.6	4.6
3/4	600	208	221	118	82.6	4.7
3/4	900/1,500	243	256	130	88.9	6.3
3/4	2,500	243	256	140	95.3	7.5
1	150	180	189	108	79.2	4.0
1	300	186	196	124	88.9	4.6
1	600	199	199	124	88.9	4.7
1	900/1,500	221	221	150	101.6	7.0
1	2,500	234	234	159	108.0	8.6
1 1/2	150	186	196	127	98.6	4.6
1 1/2	300	192	202	156	114.3	6.0
1 1/2	600	208	208	156	114.3	6.6
1 1/2	900/1,500	227	227	178	124.0	9.5
1 1/2	2,500	253	256	203	146.1	16.0
2	150	189	199	153	120.7	6.7
2	300	196	208	165	127.0	8.1
2	600	215	218	165	127.0	8.4
2	900/1,500	240	243	216	165.1	15.0
2	2,500	265	268	235	165.1	22.0

## Modular Valves - Double Block & Bleed Valves

### SDB2

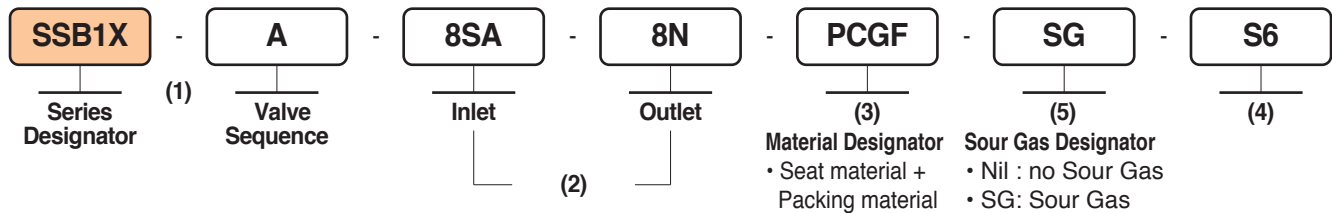


### Dimensions & Weights

Size (inch)	Rating lb	Dimensions(mm)				Weight (kg)
		L(RF)	L(RTJ)	A	C	
1/2	150	197	-	89	60.5	3.6
1/2	300	197	206	96	66.5	3.9
1/2	600	206	206	96	66.5	4.0
1/2	900/1,500	243	243	121	82.6	5.4
1/2	2,500	243	243	134	88.9	6.9
3/4	150	197	-	99	69.9	3.9
3/4	300	197	221	118	82.6	4.6
3/4	600	206	206	118	82.6	4.7
3/4	900/1,500	243	243	130	88.9	6.3
3/4	2,500	243	243	140	95.3	7.5
1	150	180	189	108	79.2	4.0
1	300	186	196	124	88.9	4.6
1	600	199	199	124	88.9	4.7
1	900/1,500	221	221	150	101.6	7.0
1	2,500	234	234	159	108.0	8.6
1 1/2	150	186	196	127	98.6	4.6
1 1/2	300	192	202	156	114.3	6.0
1 1/2	600	208	208	156	114.3	6.6
1 1/2	900/1,500	227	227	178	124.0	9.5
1 1/2	2,500	253	256	203	146.1	16.0
2	150	189	199	153	120.7	6.7
2	300	196	208	165	127.0	8.1
2	600	215	218	165	127.0	8.4
2	900/1,500	240	243	216	165.1	15.0
2	2,500	265	268	235	165.1	22.0

## Modular Valves - Single Block & Bleed / Double Block & Bleed Valves

### Ordering Information



### (1) Valve Series

Series		Valve Sequence	Primary Isolate	Secondary Isolate	Bleed	Bore Size	
						Ball	Needle
Identify							
INTERGRAL SINGLE BLOCK & BLEED VALVES (SSB)	1X:(FLANGE x 1/2"NPT) 1Z:(FLANGE x FLANGE)	A	BALL	-	NEEDLE	9.5	5.0
		B	BALL	-	OS & Y	14.0	5.0
		C	BALL	-	BALL	9.5	5.0
	2X:(FLANGE x 1/2"NPT) 2Z:(FLANGE x FLANGE)	A	OS & Y	-	OS & Y	9.5	5.0
		B	OS & Y	-	NEEDLE	9.5	5.0
		C	NEEDLE	-	NEEDLE	9.5	5.0
INTERGRAL DOUBLE BLOCK & BLEED VALVES (SDB)	1X:(FLANGE x 1/2"NPT) 1Z:(FLANGE x FLANGE)	A	BALL	BALL	NEEDLE	9.5	5.0
		B	BALL	BALL	OS & Y	14.0	5.0
		C	BALL	BALL	BALL	9.5	5.0
		D	BALL	NEEDLE	NEEDLE	9.5	5.0
		E	BALL	BALL	-	9.5	5.0
		F	BALL	NEEDLE	-	9.5	5.0
	2X:(FLANGE x 1/2"NPT) 2Z:(FLANGE x FLANGE)	A	OS & Y	OS & Y	OS & Y	9.5	5.0
		B	OS & Y	OS & Y	NEEDLE	9.5	5.0
		C	OS & Y	NEEDLE	NEEDLE	9.5	5.0
		D	NEEDLE	NEEDLE	NEEDLE	9.5	5.0

## Modular Valves - Single Block & Bleed / Double Block & Bleed Valves

### (2) Inlet & Outlet

Inch	Identify	Flange				Threads		Weld End	
		Description	Identify	Class	Identify	Type	Identify	Type	Identify
1/4	4	Spiral Finish -Raised Faced	S	150LB (ANSI B16.5)	A	NPT	N	BUTT WELD	BW
3/8	6	Smooth Finish -Raised Faced	M	300LB (ANSI B16.5)	B	BSPT	R	SOCKET WELD	SW
1/2	8	Stock Finish -Raised Faced	G	600LB (ANSI B16.5)	C				
3/4	12	Ring Type Joint -RTJ	J	900LB (ANSI B16.5)	D				
1	16	Spiral Finish -Flat Faced	H	1,500LB (ANSI B16.5)	E				
1 1/2	24	Smooth Finish -Flat Faced	K	2,500LB (ANSI B16.5)	F				
2	32	Stock Finish -Flat Faced	R	-	-				

### (3) Ball Valve Seat Material or Needle Valve Packing

Ball Valve Seat		Needle Valve Packing	
Seat Material	Identify	Packing Material	Identify
PVDF	Nil	PTFE	TE
PTFE	TE	Graphite	GF
PEEK	PK		
PCTFE	PC		

### (4) Body Material

Trim Material	
Material	Identify
ASTM A182 F316	S6
ASTM A182 F51	F51
UNS NO 4400	A400
ASTM A105	CS
ASTM A350 LF2	LF2

### (5) Option

- Materials are selected in accordance with NACE standards.
- To order, add - SG as a suffix to the ordering number. Example : SSB1X-A-8SA-8N-PC-SG-S6



We · support · the  
i n n o v a t i o n s · o f · c u s t o m e r s

# Leak - Proof Flow & Control Solution Partner

The Best Partner  
for Value Creation

**S-LOK®** Monoflange Valves

## Monoflange Valves

---



**SMNF**

## Modular Valves - Monoflange Valves

**Monoflange valves** are integrally forged, one-piece double block and bleed assemblies for primary isolation of pressure take-offs. Where the valve is directly mounted to the vessel or process pipe. Instruments may be directly mounted to the valve outlet or alternatively Remotely with gauge lines/ impulse work.

### Applications

- Isolation
- Block and Bleed
- Double Block and Bleed
- Pressure Measurement
- Chemical Injection
- Level Measurement
- Flow Measurement



### Standard Features

- ANSI B16.5 Flanged Inlet connections 1/2" to 2" sizes.
- Class150 rated to Class2500 rated.
- API flanged Inlet connections sizes to 2 1/16".
- 1/2 NPT threaded female outlet to ANSI/ASME B1.20.1.
- 1/2 NPT threaded female vent connection to ANSI/ASME B.1.20.1.
- Material thickness to ANSI B16.34.
- Firesafe to API 607, BS6755 Part2.

### Standard Pressure Testing

- To BS6755 Part1.

### Standard Material Traceability

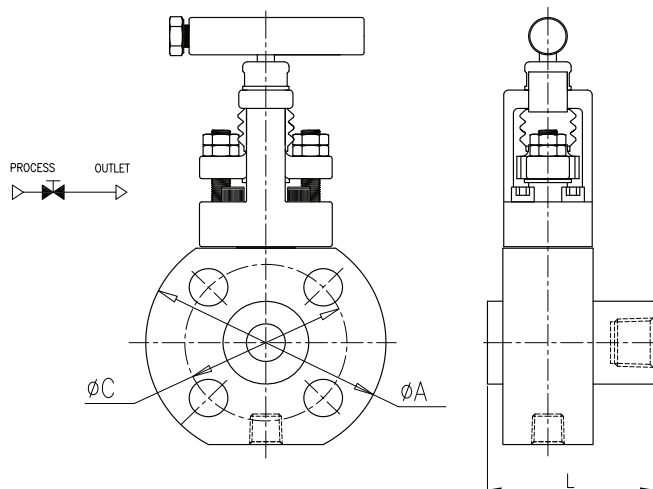
- To EN 10204 3.1B(Body only).

## OS&Y Needle Type and Needle Type Globe Valve Packing Materials

- Standard valves are offered with Graphite. PTFE is also available as an option.

## Modular Valves - Monoflange Valves

### SMNF1P

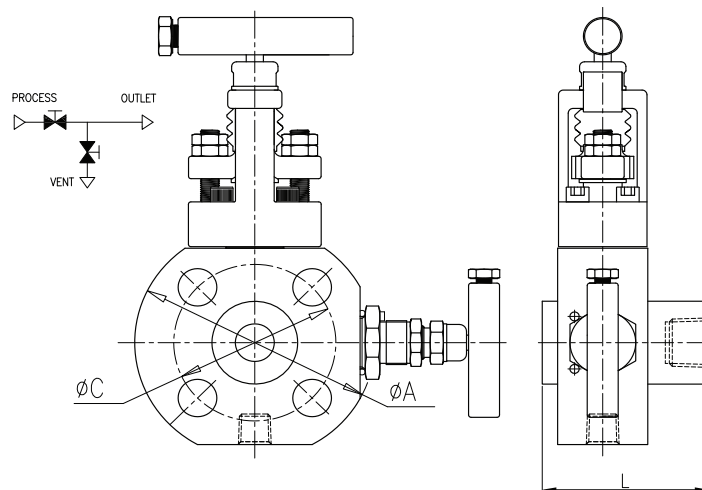


## Dimensions & Weights

Size (inch)	Rating lb	Dimensions(mm)				Weight (kg)
		L(RF)	L(RTJ)	A	C	
1/2	150	63.50	-	98.55	60.5	2.0
1/2	300	63.50	67.56	98.55	66.5	2.0
1/2	600	68.35	67.56	98.55	66.5	2.0
1/2	900/1,500	68.35	68.35	133.35	82.6	3.4
1/2	2,500	68.35	68.35	133.35	88.9	3.4
3/4	150	63.50	-	98.55	69.9	2.0
3/4	300	63.50	68.35	133.35	82.6	3.4
3/4	600	68.35	68.35	133.35	82.6	3.4
3/4	900/1,500	68.35	68.35	133.35	88.9	3.4
3/4	2,500	73.35	73.35	158.75	95.3	5.5
1	150	63.50	68.35	133.35	79.2	2.4
1	300	63.50	68.35	133.35	88.9	3.4
1	600	68.52	68.35	133.35	88.9	3.4
1	900/1,500	73.35	73.35	158.75	101.6	5.5
1	2,500	73.35	73.35	158.75	108.0	5.5
1 1/2	150	63.35	68.35	127.00	98.6	3.2
1 1/2	300	68.52	68.52	158.75	114.3	5.5
1 1/2	600	73.35	73.35	158.75	114.3	5.5
1 1/2	900/1,500	73.35	73.35	177.80	124.0	7.8
1 1/2	2,500	82.15	83.72	235.00	146.1	11.4
2	150	68.52	73.35	158.75	120.7	5.5
2	300	68.52	74.92	177.80	127.0	7.8
2	600	73.35	74.92	177.80	127.0	7.8
2	900/1,500	82.15	83.72	235.00	165.1	11.0

## Modular Valves - Monoflange Valves

### SMNF2P

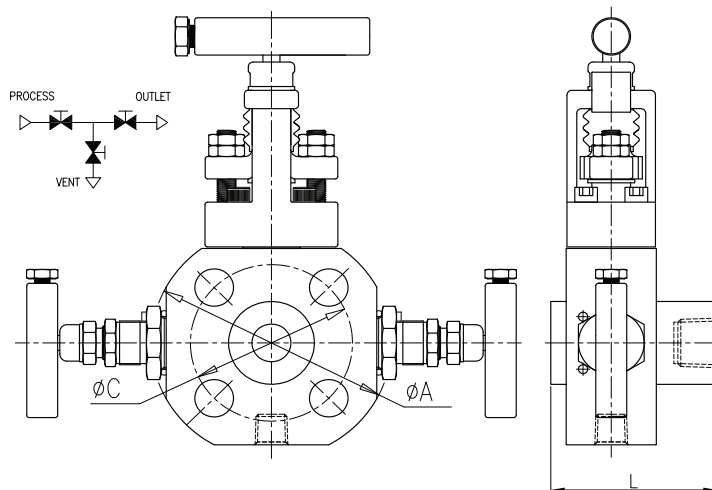


### Dimensions & Weights

Size (inch)	Rating lb	Dimensions(mm)				Weight (kg)
		L(RF)	L(RTJ)	A	C	
1/2	150	63.50	-	98.55	60.5	2.0
1/2	300	63.50	67.56	98.55	66.5	2.0
1/2	600	68.35	67.56	98.55	66.5	2.0
1/2	900/1,500	68.35	68.35	133.35	82.6	3.4
1/2	2,500	68.35	68.35	133.35	88.9	3.4
3/4	150	63.50	-	98.55	69.9	2.0
3/4	300	63.50	68.35	133.35	82.6	3.4
3/4	600	68.35	68.35	133.35	82.6	3.4
3/4	900/1,500	68.35	68.35	133.35	88.9	3.4
3/4	2,500	73.35	73.35	158.75	95.3	5.5
1	150	63.50	68.35	133.35	79.2	2.4
1	300	63.50	68.35	133.35	88.9	3.4
1	600	68.52	68.35	133.35	88.9	3.4
1	900/1,500	73.35	73.35	158.75	101.6	5.5
1	2,500	73.35	73.35	158.75	108.0	5.5
1 1/2	150	63.35	68.35	127.00	98.6	3.2
1 1/2	300	68.52	68.52	158.75	114.3	5.5
1 1/2	600	73.35	73.35	158.75	114.3	5.5
1 1/2	900/1,500	73.35	73.35	177.80	124.0	7.8
1 1/2	2,500	82.15	83.72	235.00	146.1	11.4
2	150	68.52	73.35	158.75	120.7	5.5
2	300	68.52	74.92	177.80	127.0	7.8
2	600	73.35	74.92	177.80	127.0	7.8
2	900/1,500	82.15	83.72	235.00	165.1	11.0

## Modular Valves - Monoflange Valves

### SMNF3P

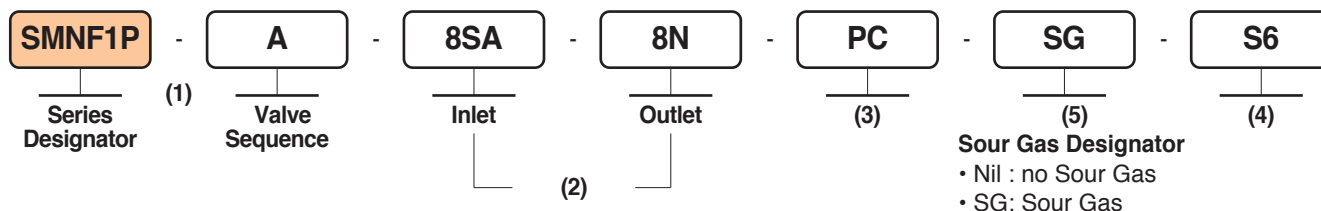


## Dimensions & Weights

Size (inch)	Rating lb	Dimensions(mm)				Weight (kg)
		L(RF)	L(RTJ)	A	C	
1/2	150	63.50	-	98.55	60.5	2.0
1/2	300	63.50	67.56	98.55	66.5	2.0
1/2	600	68.35	67.56	98.55	66.5	2.0
1/2	900/1,500	68.35	68.35	133.35	82.6	3.4
1/2	2,500	68.35	68.35	133.35	88.9	3.4
3/4	150	63.50	-	98.55	69.9	2.0
3/4	300	63.50	68.35	133.35	82.6	3.4
3/4	600	68.35	68.35	133.35	82.6	3.4
3/4	900/1,500	68.35	68.35	133.35	88.9	3.4
3/4	2,500	73.35	73.35	158.75	95.3	5.5
1	150	63.50	68.35	133.35	79.2	2.4
1	300	63.50	68.35	133.35	88.9	3.4
1	600	68.52	68.35	133.35	88.9	3.4
1	900/1,500	73.35	73.35	158.75	101.6	5.5
1	2,500	73.35	73.35	158.75	108.0	5.5
1 1/2	150	63.35	68.35	127.00	98.6	3.2
1 1/2	300	68.52	68.52	158.75	114.3	5.5
1 1/2	600	73.35	73.35	158.75	114.3	5.5
1 1/2	900/1,500	73.35	73.35	177.80	124.0	7.8
1 1/2	2,500	82.15	83.72	235.00	146.1	11.4
2	150	68.52	73.35	158.75	120.7	5.5
2	300	68.52	74.92	177.80	127.0	7.8
2	600	73.35	74.92	177.80	127.0	7.8
2	900/1,500	82.15	83.72	235.00	165.1	11.0

## Modular Valves - Monoflange Valves

### Ordering Information



#### (1) Valve Series

Series		Primary Isolate	Secondary Isolate	Bleed	Bore Size		
Identify	Valve Sequence				Ball	Needle	
MONOFLANGE VALVES (SMNF)	1P	A	OS & Y	-	-	5.0	
		B	NEEDLE	-	-	5.0	
	2P	A	OS & Y	-	NEEDLE	-	5.0
		B	NEEDLE	-	NEEDLE	-	5.0
	3P	A	NEEDLE	NEEDLE	NEEDLE	-	5.0
		B	NEEDLE	OS & Y	NEEDLE	-	5.0
		C	OS & Y	NEEDLE	NEEDLE	-	5.0
		D	OS & Y	OS & Y	NEEDLE	-	5.0

#### (2) Inlet & Outlet

Inch	Identify	Flange				Threads		Weld End	
		Description	Identify	Class	Identify	Type	Identify	Type	Identify
1/4	4	Spiral Finish -Raised Faced	S	150LB (ANSI B16.5)	A	NPT	N	BUTT WELD	BW
3/8	6	Smooth Finish -Raised Faced	M	300LB (ANSI B16.5)	B	BSPT	R	SOCKET WELD	SW
1/2	8	Stock Finish -Raised Faced	G	600LB (ANSI B16.5)	C				
3/4	12	Ring Type Joint -RTJ	J	900LB (ANSI B16.5)	D				
1	16	Spiral Finish -Flat Faced	H	1,500LB (ANSI B16.5)	E				
1 1/2	24	Smooth Finish -Flat Faced	K	2,500LB (ANSI B16.5)	F				
2	32	Stock Finish -Flat Faced	R	-	-				

### (3) Needle Valve Packing

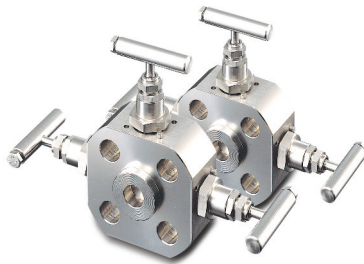
Needle Valve Packing	
Packing Material	Identify
PTFE	TE
Graphite	GF

### (4) Body Material

Trim Material	
Material	Identify
ASTM A182 F316	S6
ASTM A182 F51	F51
UNS NO 4400	A400
ASTM A105	CS
ASTM A350 LF2	LF2

### (5) Option

- Materials are selected in accordance with NACE standards.
- To order, add - SG as a suffix to the ordering number. Example : SMNF1P-A-8SA-8N-GF-SG-S6



27 Noksansandan361-ro, Gangseo-gu  
(Songjeong-dong), Busan, Korea

Tel : +82-51-899-6700, Fax : +82-51-899-6799

E-Mail : [overseas@ehansun.co.kr](mailto:overseas@ehansun.co.kr)

[sales@ehansun.co.kr](mailto:sales@ehansun.co.kr)

Website : [www.ehansun.co.kr](http://www.ehansun.co.kr), [www.slok.co.kr](http://www.slok.co.kr)